

Field trial  
On Perch Fish  
(*Perca Schrenkii*)  
China, 2014



**Trial duration:**

**60 days.**

**Season:**

May, June, July, August.

**System:**

Oriented to meat production.

**Feeding:**

Daily.

**Feed type:**

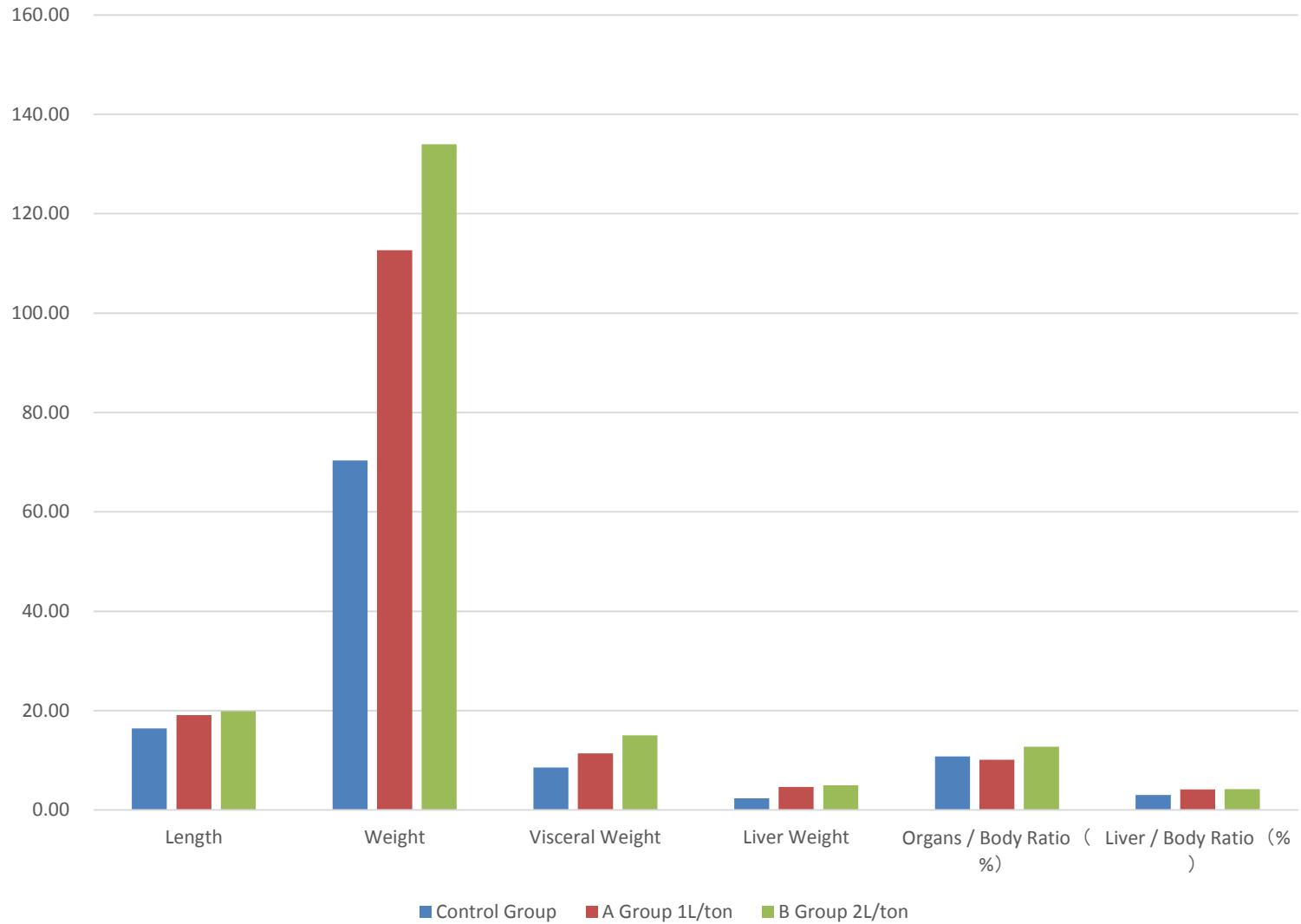
Granulated, special formula,  
1mm size.

**Type**

Same formula to three groups

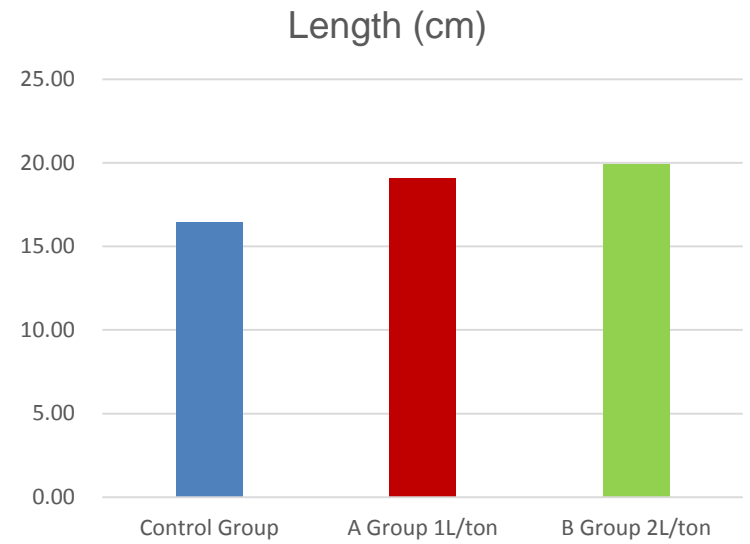
Report on Trials with Perch (Perca Schrenkii)						
	Average Results					
	Length	Weight	Visceral Weight	Liver Weight	Organs / Body Ratio (%)	Liver / Body Ratio (%)
Control Group	16.41	70.34	8.53	2.37	10.77	3.02
A Group	19.10	112.63	11.40	4.67	10.10	4.14
B Group	19.90	133.98	15.03	5.00	12.72	4.22
Control Group	Length	Weight	Visceral Weight	Liver weight	Organs / Body Ratio (%)	Liver / Body Ratio (%)
1	16.50	65.00	8.60	2.50	13.23	3.85
2	16.00	67.20	5.50	1.60	8.18	2.38
3	18.30	105.60	11.50	3.00	10.89	2.84
4	16.20	61.90				
5	15.50	58.60				
6	17.30	89.20				
7	15.30	54.30				
8	16.20	60.90				
均值	16.41	70.34	8.53	2.37	10.77	3.02
Group A (1 L/Ton)						
1	19.50	125.30	13.20	5.40	10.53	4.31
2	19.10	105.30	10.50	4.60	9.97	4.37
3	18.70	107.30	10.50	4.00	9.79	3.73
均值	19.10	112.63	11.40	4.67	10.10	4.14
Group B (2 L/Ton)						
1	19.90	135.30	15.40	5.40	11.38	3.99
2	18.50	92.20	14.20	4.60	15.40	4.99
3	19.70	136.20	15.50	5.00	11.38	3.67
4	21.50	172.20				
Average	19.90	133.98	15.03	5.00	12.72	4.22

# Biometry

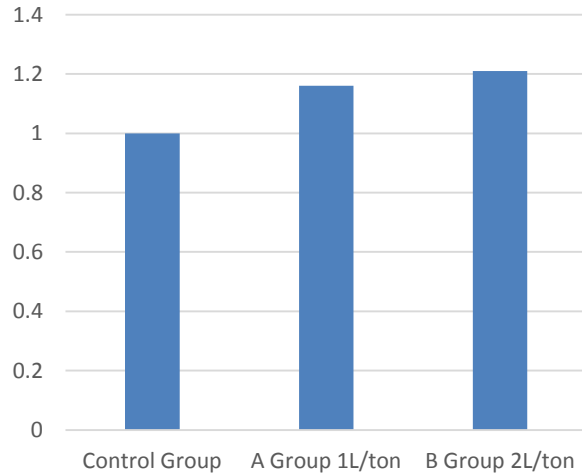


A volumen-dependance of Viusid dose on feed, is related directly to growth and weigth of crop.

	Length (cm)
<b>Control Group</b>	<b>16.41</b>
<b>A Group 1 L/ton</b>	<b>19.10</b>
<b>B Group 2 L/ton</b>	<b>19.90</b>



Length increases (%)



Control

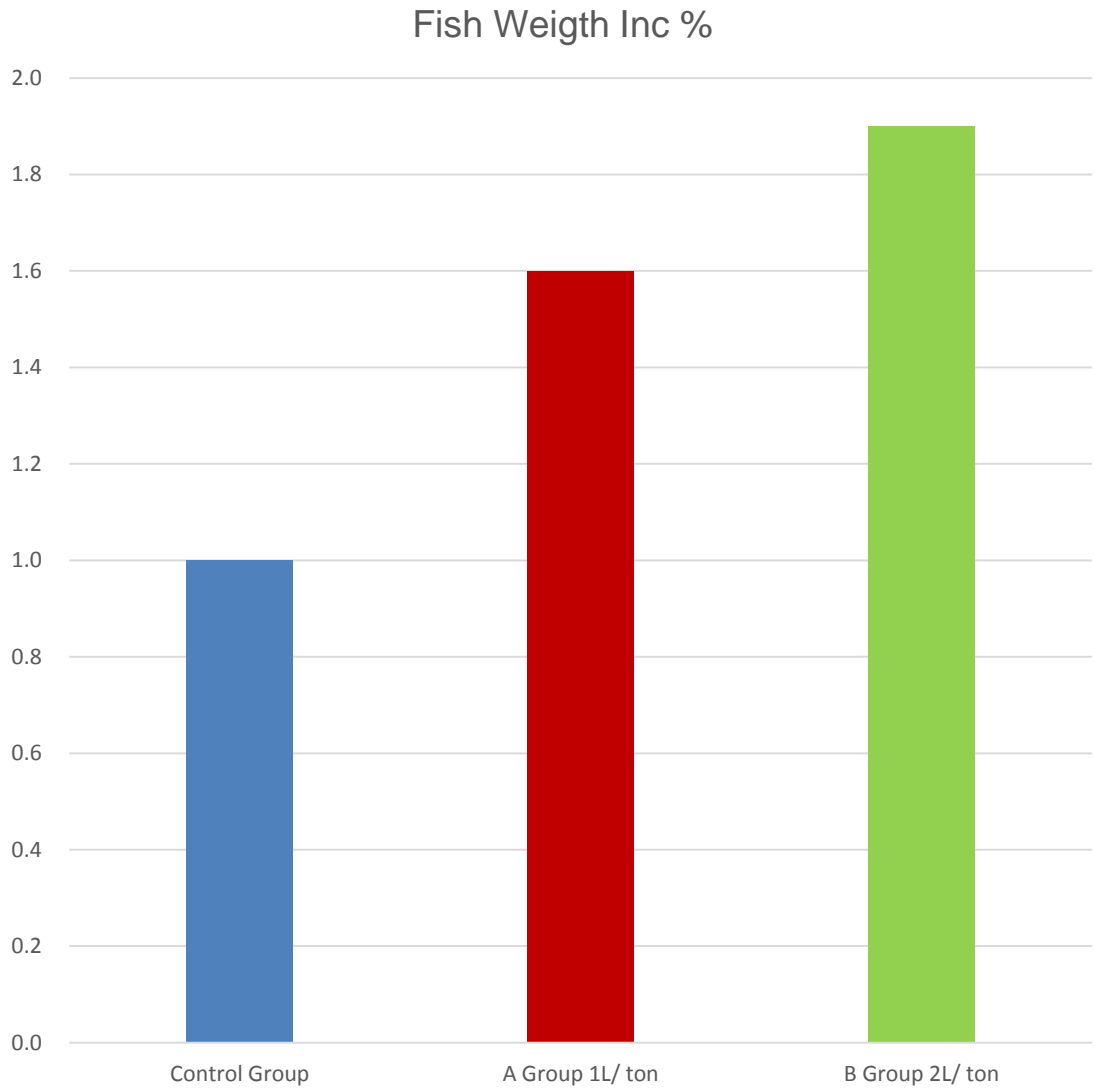


A Group

B Group

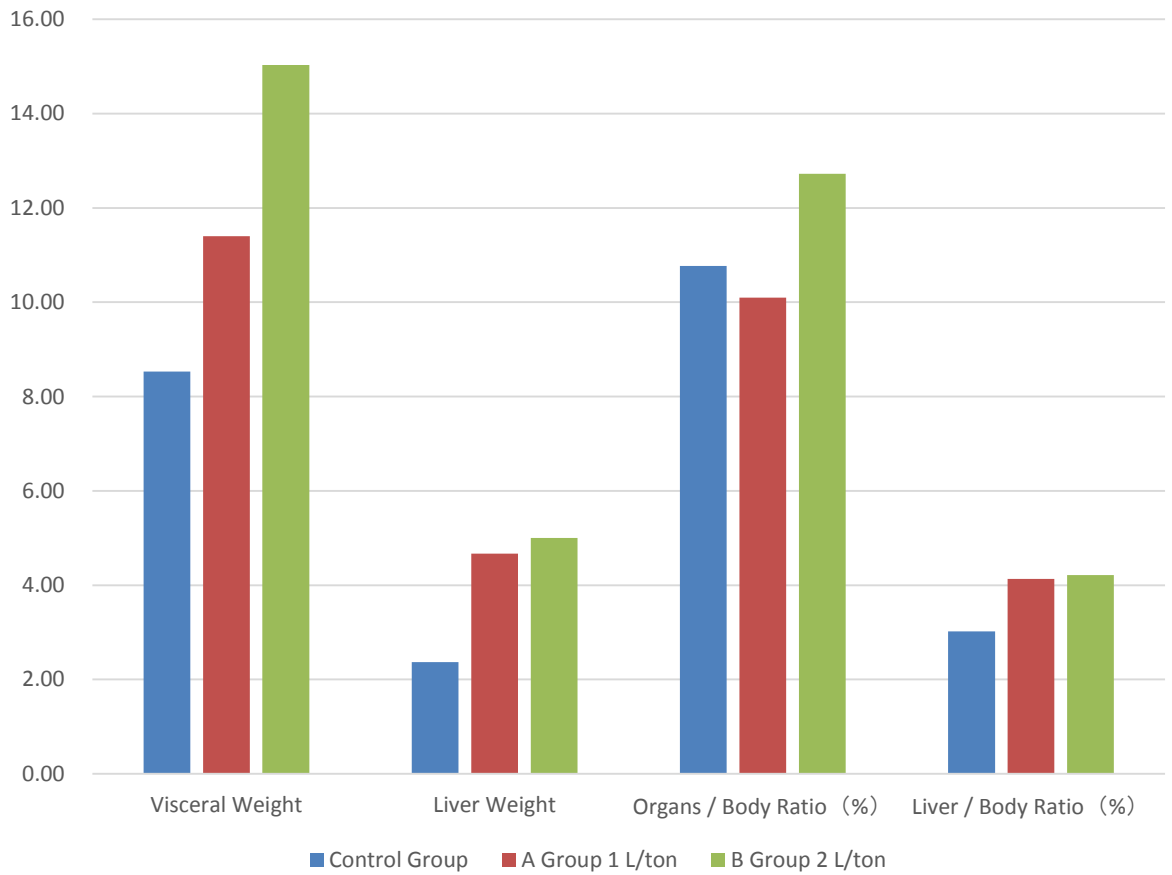
16.3% and  
21.2% differences  
in length  
Viusid vs Control group

	Weight	inc%
Control Group	70.34	<b>1</b>
A Group 1 L/ ton	112.63	<b>1.6</b>
B Group 2 L/ ton	133.98	<b>1.9</b>



Treated groups with Viusid show important increasings: 60 and 90%, compared against not treated individuals.

	Visceral Weight	Liver Weight	Organs / Body Ratio (%)	Liver / Body Ratio (%)
<b>Control Group</b>	8.53	<b>2.37</b>	10.77	<b>3.02</b>
<b>A Group 1 L/ton</b>	11.40	<b>4.67</b>	10.10	<b>4.14</b>
<b>B Group 2 L/ton</b>	15.03	<b>5.00</b>	12.72	<b>4.22</b>



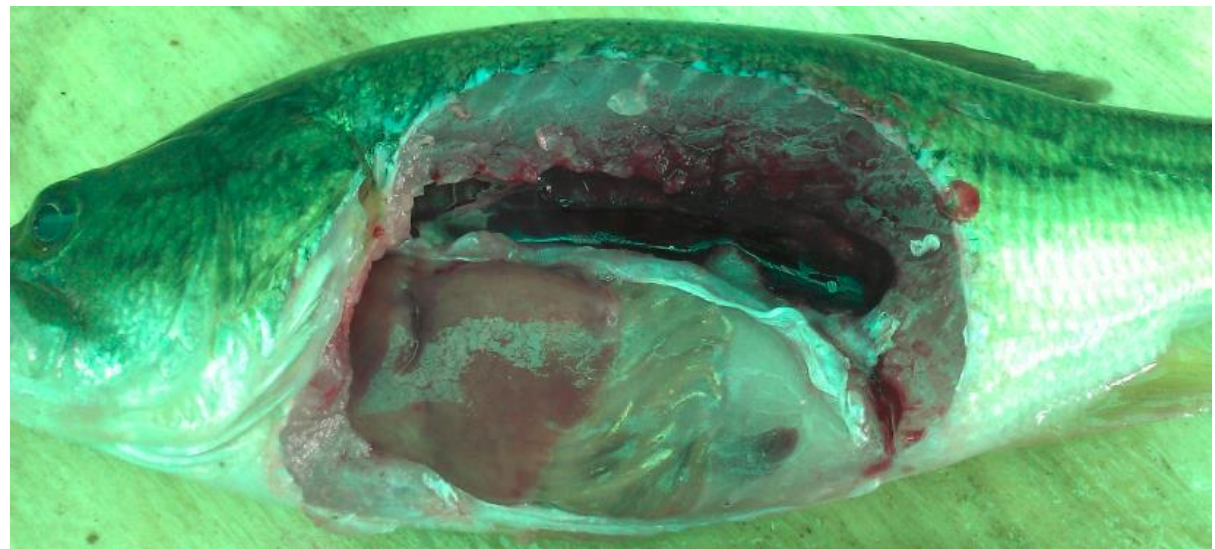
Control group: without Viusid  
*Liver with lipid infiltration  
and smaller size*



Group A:  
Viusid 1L/ ton  
*Liver less fatty  
and bigger*



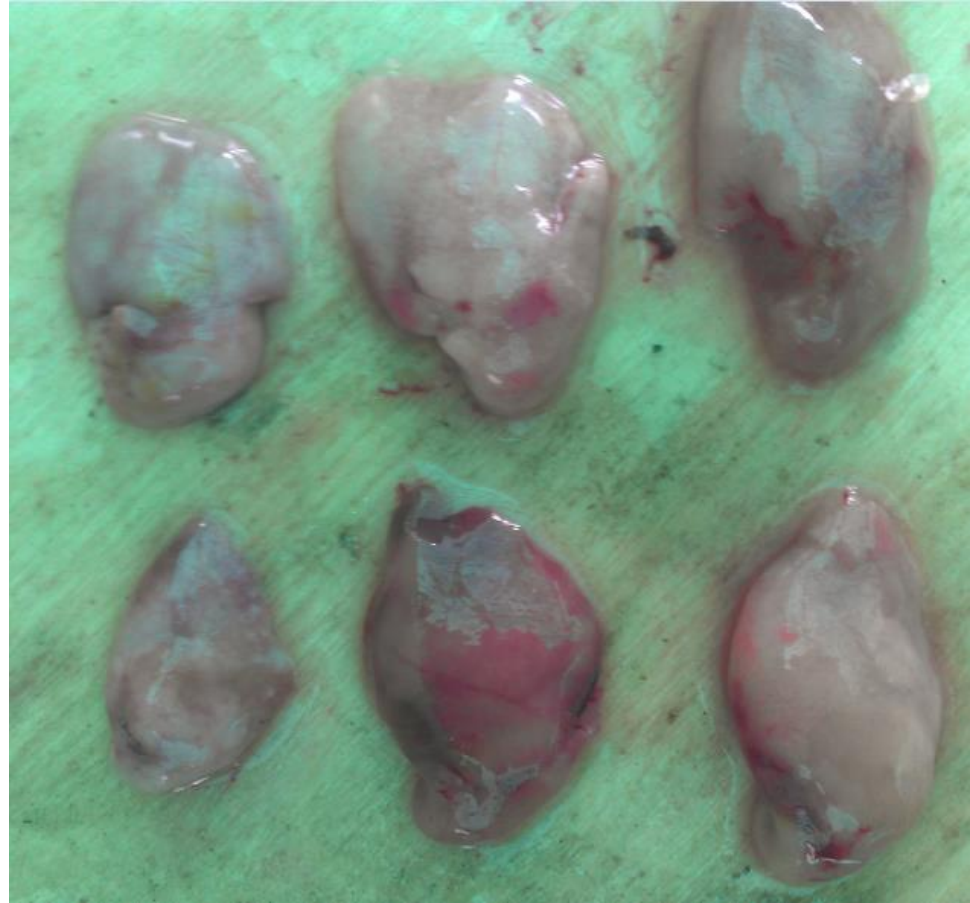
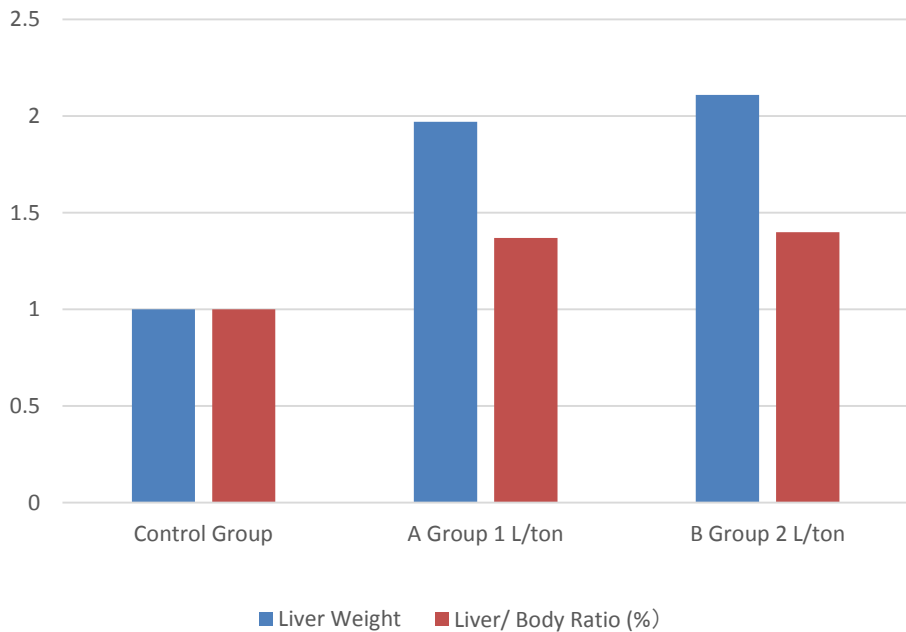
Group B:  
Viusid 2L/ton  
*Liver less fatty,  
biggest and  
more functional*





	Liver Weight		Liver/ Body Ratio (%)	
	(g)	inc%	(g)	inc%
Control Group	2.37	<b>1.0</b>	3.02	<b>1.0</b>
A Group 1 L/ton	4.67	<b>1.97</b>	4.14	<b>1.37</b>
B Group 2 L/ton	5.00	<b>2.11</b>	4.22	<b>1.40</b>

liver: body ratio (%)  
increase



Based on control group=1, in treated groups with Viusid, livers show double weight (1.97 and 2.11), more functional condition, however their proportion against body weight is less, reflecting a better development of tissues and muscle.

# Liver comparison 3 groups-01



Liver comparison 3 groups-04





# Immunity & Growth Viusid Program

Fish	Viusid	Viusid
	<b>Powder</b>	<b>Liquid</b>
Breeders	1-2 kg/ ton Included at Feed Plant	1-2L/ ton Included at Farm by spraying  Equals to: 25ml-50ml diluted in 1.5L water, To spray 25 kg of feed
Incubation	-	1L/ 100 ton of water
Bioflock	1-2 kg/ ton Included at Feed Plant	optional
Nursery		Optional
Pre-fattening		Optional
Fattening		Optional